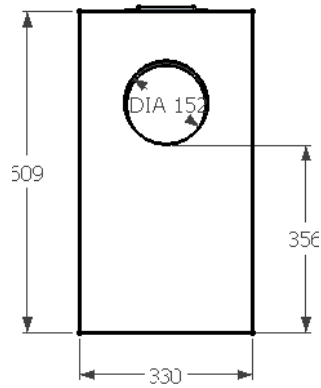
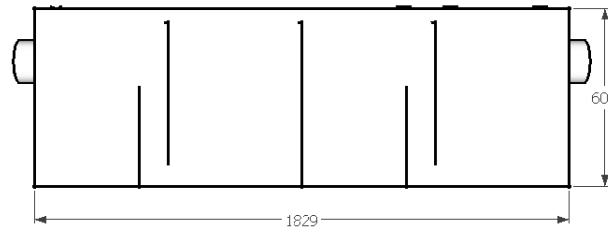


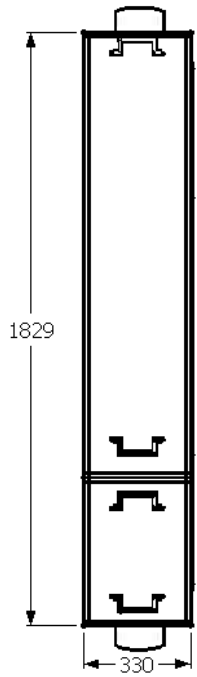
Front view - Inlet



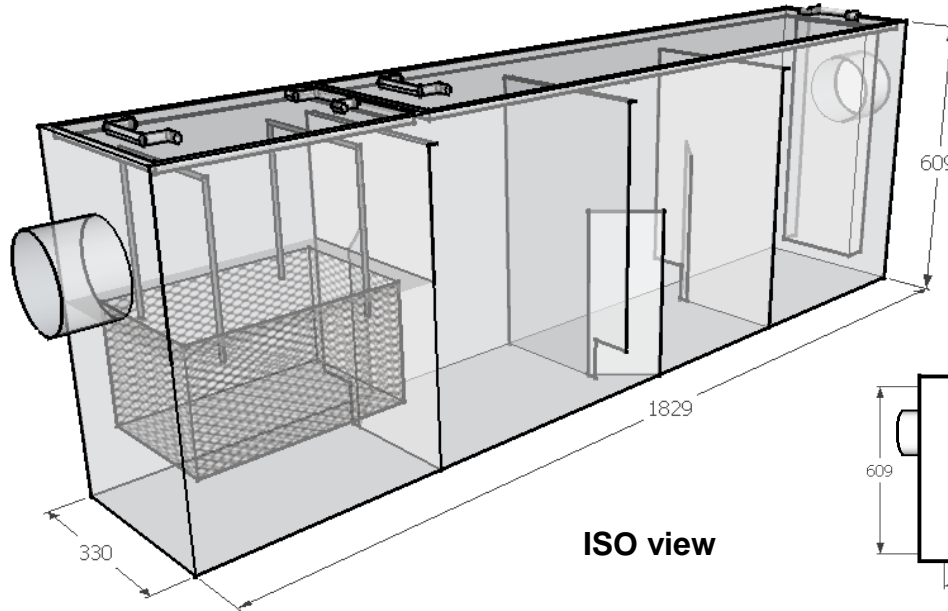
Back view - outlet



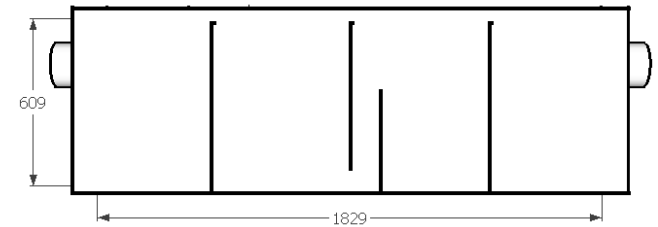
Left view



Top view



ISO view



Right view

Specifications

Model: **GTA3800**
 Material: Stainless Steel 304
 Thickness: 0.8 mm
 Inlet pipe size: 6" inch length 4"
 Outlet pipe size: 6" inch length 4"
 Flow rate: 300 GPM
 Capacity: 367Liter

SIRIM: YES
 Patent: YES
 Trade Mark: EJAU
 Warranty: 5 Years
 Ready Stock: YES
 Delivery: Between 3 days
 Own Factory: YES, In Selangor

KUALITI ALAM HIJAU (M) SDN BHD

DRAWING FOR :

DRAWING DESCRIPTION :
 Material : Stainless Steel 304 Non Rusted

DATE : 30/4/2014

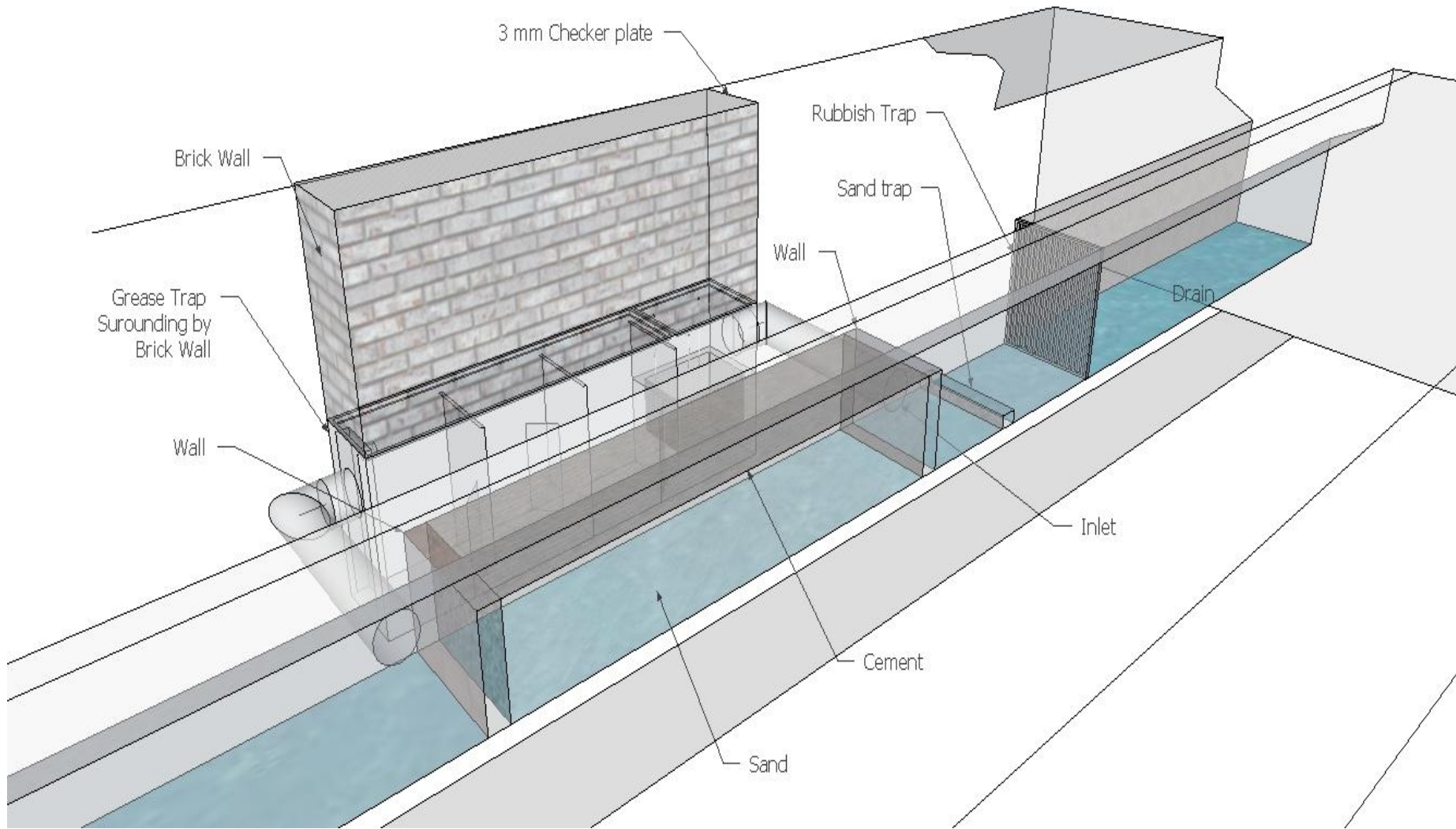
NOTE :
 All dimension in MM unless otherwise specified

Drawn by : Liza

Checked by : Jackson

Approved by : Marizan

INDUSTRIAL EFFLUENT INSTALATION GUIDE



KUALITI ALAM HIJAU (M) SDN BHD

DRAWING FOR :

DRAWING DESCRIPTION :

Material : Stainless Steel 304 Non Rusted

DATE : 30/4/2014

NOTE :

All dimension in MM unless otherwise specified

Drawn by : Liza

Checked by : Jackson Wong

Approved by : Marizan